



**SOPHIE
GANNON
GALLERY**

MANINI GUMANA

Larrakitj memorial poles + bark paintings

8 - 24 August 2024

SOPHIE GANNON GALLERY
2 Albert Street Richmond VIC 3121 Australia T +613 9421 0857
info@sophieganngallery.com.au www.sophieganngallery.com.au

MANINI GUMANA

Larrakitj memorial poles + bark paintings

Manini Gumana is a female Yolŋu artist from North East Arnhem Land. She lives full time at one of the most remote homelands in Arnhem Land. Her home at Gängan is only accessible by road during the Dry season. It is four hours drive on a rough dirt track from the nearest town. It is a collection of about ten houses completely surrounded by Stringybark forest.

But the topic of her art is the coastal area known as Garrapara which is another hours drive from Gängan. Garrapara is in the far north western corner of Blue Mud Bay. The coded design for this place points literate viewers to the memorised text of lengthy epic song poems which describe the creation of the coast and the event which occurred here in the ancestral past/present/future.

The zigzag design captures the rough choppy sea caused by the winds of Bulunu blowing from down South in the months of May to October. It reveals the origin of the various bays as shaped by the giant Queenfish biting chunks from the landscape as it launched itself at tiny baitfish in the shallows.

The full epic of the manikay (sacred song) describes the death by drowning of two hunters after a massive tidal surge swamped their canoe and flooded inland for tens of kilometres. This event sets up the mortuary ceremonies for the saltwater Dhalwaŋu clan around the creation of a canoe shaped sand sculpture known as Yiŋapuŋapu. This site is also a sanctified location for the dispute resolution ceremony known as Makarrata.

Gängan is possibly one of the most intensely dense concentrations of famous artists on the planet. A tiny hamlet in the deep forest has generated many award winning artists, including Gunybi Ganambarr, Djirrirra Wunŋmurra, Dr. Gawirrin Gumana AO, Nawurapu Wunŋmurra, Yangarriny Wunŋmurra and Manini's husband Garawan Wanambi.

Each of these artist make very different work and only Manini has concentrated on the waters of Garrapara. Another distinguishing feature of her work is the delicate mixing of ochres into subtle pastel combinations of pink, grey and cream. This understated palette is made solely from the red, black and yellow rocks which are the base of all Yolŋu painting. The grace of her 'feminine' tones are unique amongst her peers.



MANINI GUMANA

Garrapara (1821-23), 2023

Natural earth pigments on stringy bark pole

224 x 24 cm

\$10,800 incl. GST





MANINI GUMANA
Garrapara (9423-22), 2022
Natural earth pigments on stringy bark pole
225 x 19 cm
\$9,300 incl. GST



MANINI GUMANA

Garrapara (1178-24), 2024

Natural earth pigments on stringy bark pole

188 x 26 cm

\$8,300 incl. GST



MANINI GUMANA

Garrapara (1244-22), 2022

Natural earth pigments on stringy bark pole

239 x 18 cm

\$9,300 incl. GST



MANINI GUMANA

Garrapara (712-22), 2022

Natural earth pigments on stringy bark pole

211 x 30 cm

\$9,300 incl. GST





MANINI GUMANA

Garrapara (2451-21), 2021

Natural earth pigments on stringy bark pole

224 x 19 cm

\$9,300 incl. GST





MANINI GUMANA

Garrapara (5569-23), 2023

Natural earth pigments on stringy bark pole

205 x 18 cm

\$9,300 incl. GST





MANINI GUMANA

Garrapara (7413-23), 2023

Natural earth pigments on stringy bark pole

214.5 x 13 cm

\$7,800 incl. GST



MANINI GUMANA
Garrapara (725-24), 2024
Natural earth pigments on stringy bark pole
201 x 17.5 cm
\$8,800 incl. GST



MANINI GUMANA

Garrapara (1289-24), 2024

Natural earth pigments on stringy bark pole

195 x 15.5 cm

\$8,300 incl. GST





MANINI GUMANA

Garrapara (3820-23), 2023

Natural earth pigments on stringy bark pole

211 x 24 cm

\$9,800 incl. GST



MANINI GUMANA

Garrapara (6180-23), 2023

Natural earth pigments on stringy bark pole

200 x 15 cm

\$9,300 incl. GST



MANINI GUMANA

Garrapara (4815-23), 2023

Natural earth pigments on stringy bark pole

207 x 16 cm

\$9,300 incl. GST





MANINI GUMANA

Garrapara (3819-23), 2023

Natural earth pigments on stringy bark pole

219 x 15 cm

\$9,300 incl. GST



MANINI GUMANA

Garrapara (4209-22), 2022

Natural earth pigments on stringy bark pole

243 x 16 cm

\$9,300 incl. GST





MANINI GUMANA

Garrapara (4612-23), 2023

Natural earth pigments on stringy bark pole

229 x 15 cm

\$9,300 incl. GST





MANINI GUMANA

Garrapara (643-24), 2024

Natural earth pigments on stringy bark pole

211 x 16 cm

\$9,300 incl. GST





MANINI GUMANA
Garrapara (2188-23), 2023
Natural earth pigments on stringy bark
90.5 x 37.5 cm
\$3,200 incl. GST



MANINI GUMANA

Garrapara (1817-24), 2024

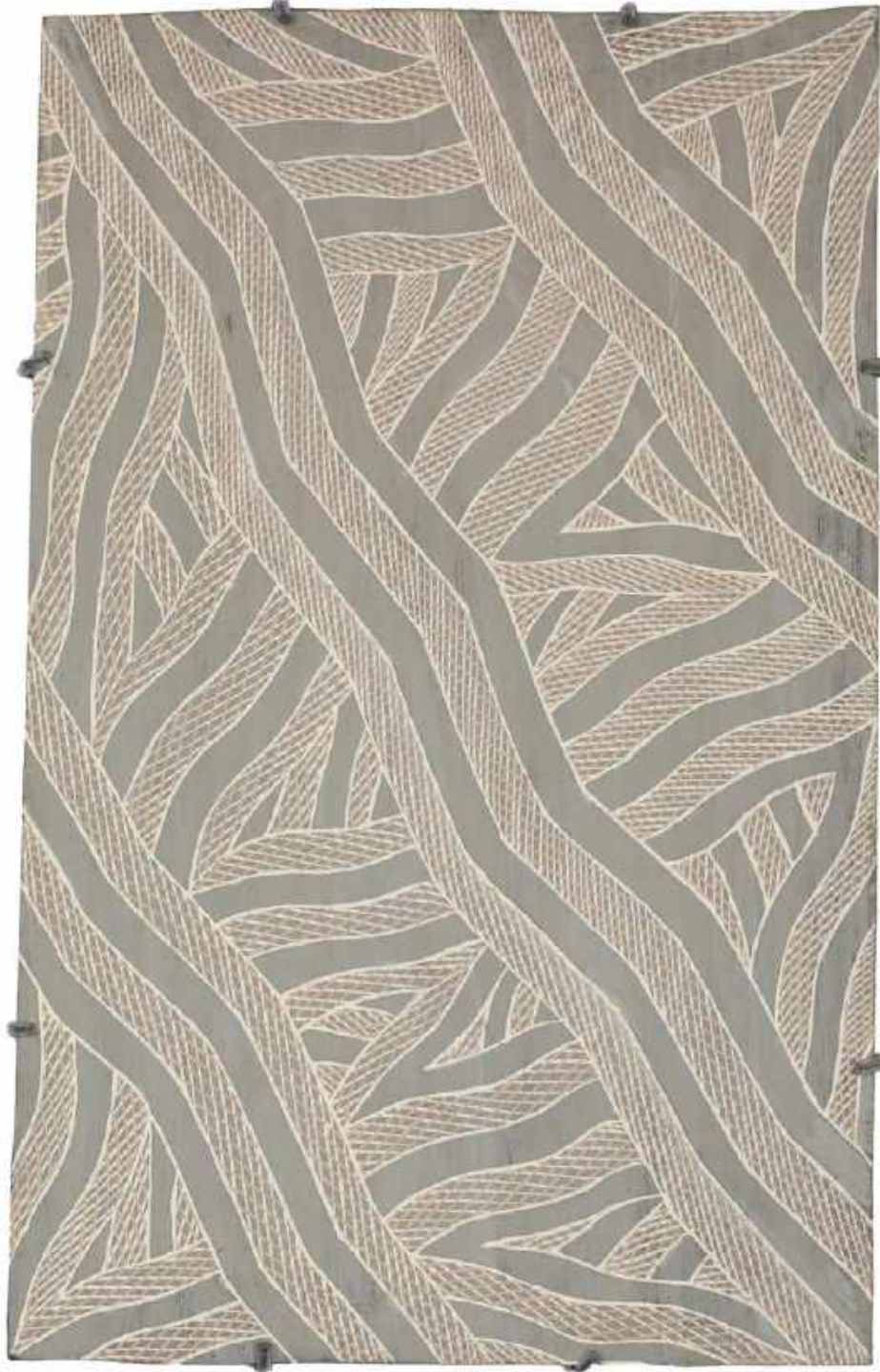
Natural earth pigments on stringy bark

95 x 30 cm

\$3,000 incl. GST



MANINI GUMANA
Garrapara (1321-21), 2021
Natural earth pigments on stringy bark
84 x 36 cm
\$3,200 incl. GST



MANINI GUMANA

Garrapara (3348-24), 2024

Natural earth pigments on stringy bark

60 x 37.5 cm

\$2,200 incl. GST



MANINI GUMANA
Garrapara (3022-23), 2023
Natural earth pigments on stringy bark
60 x 29 cm
\$1,200 incl. GST



MANINI GUMANA

Garrapara (2181-24), 2024

Natural earth pigments on stringy bark

56 x 50 cm

\$2,500 incl. GST



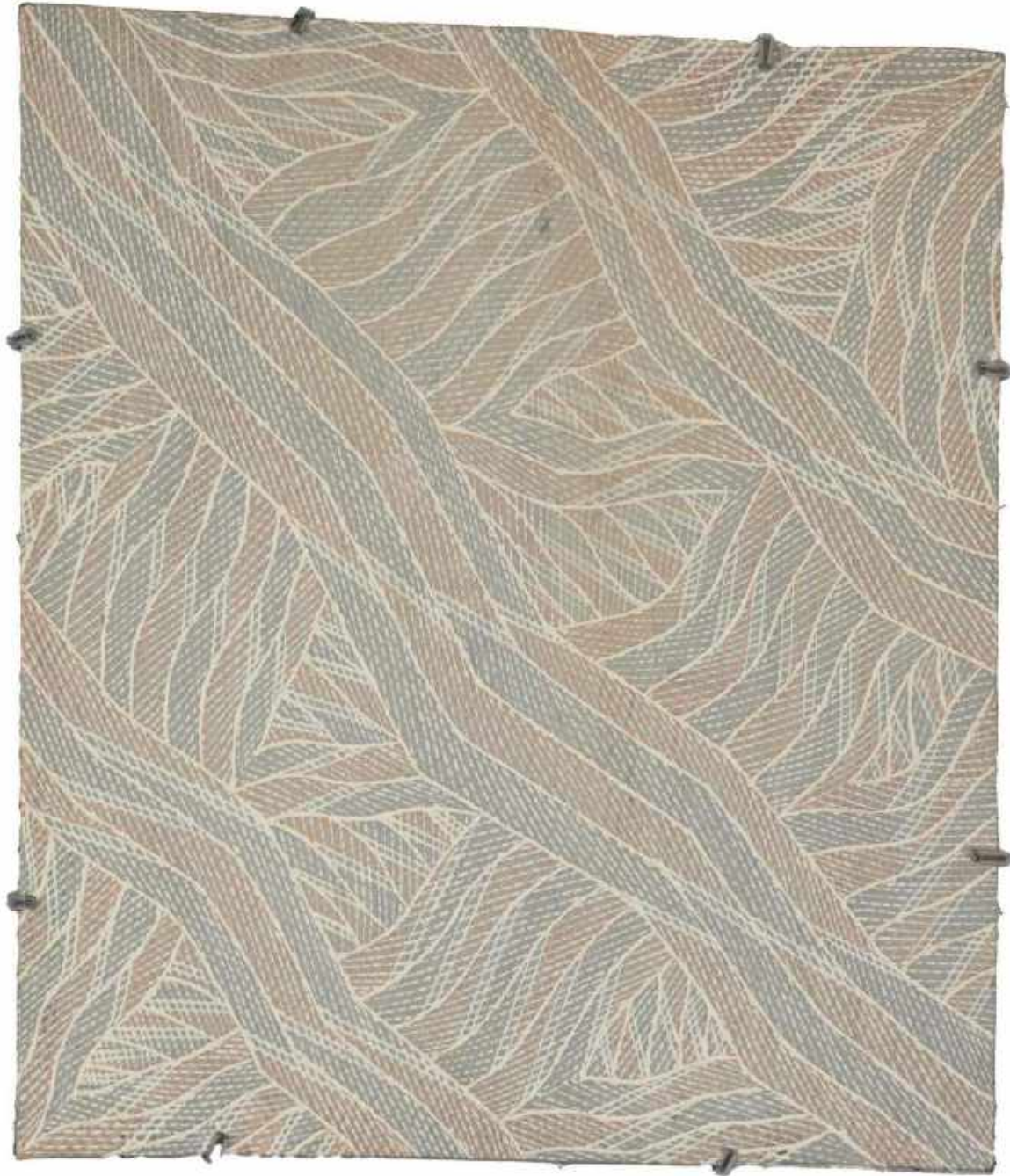
MANINI GUMANA

Garrapara (1322-21), 2021

Natural earth pigments on stringy bark

91 x 44 cm

\$3,500 incl. GST



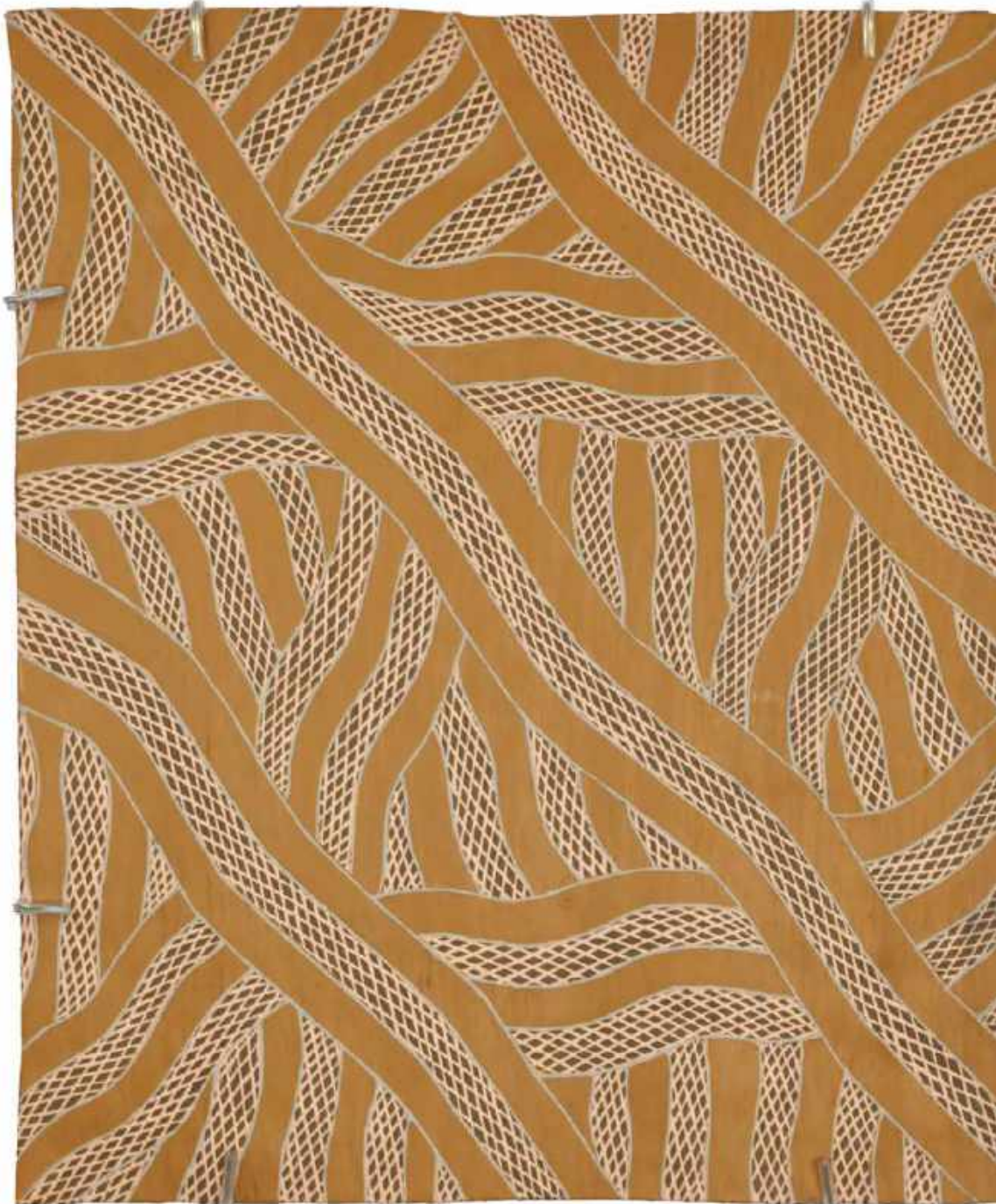
MANINI GUMANA

Garrapara (3347-24), 2024

Natural earth pigments on stringy bark

50.5 x 4366 cm

\$2,500 incl. GST



MANINI GUMANA

Garrapara (2182-24), 2024

Natural earth pigments on stringy bark

57 x 49.5 cm

\$2,500 incl. GST



MANINI GUMANA

Garrapara (1714-24), 2024

Natural earth pigments on stringy bark

78 x 26 cm

\$950 incl. GST



MANINI GUMANA
Garrapara (3000-23), 2023
Natural earth pigments on stringy bark
74 x 29 cm
\$2,500 incl. GST



MANINI GUMANA

Garrapara (1057-24), 2024

Natural earth pigments on stringy bark

67 x 24 cm

\$950 incl. GST



MANINI GUMANA

Garrapara (3766-24), 2024

Natural earth pigments on stringy bark

76 x 53 cm

\$3,500 incl. GST



MANINI GUMANA

Larrakitj memorial poles + bark paintings

Artist Manini Gumana (b. 1977) lives at her homeland, Gängan, and is a member of Buku-Larrngay Mulka Art Centre at Yirrkala, Arnhem Land.

In this, Manini Gumana's first solo exhibition with Sophie Gannon Gallery, Gumana has included a selection of 17 larrakitj (a termite-hollowed, intricately painted tree trunk which acts as a memorial pole) and 13 paintings on stringy bark.

Gumana's father was Dhakawal #1 Gumana, a highly regarded leader who died in 1994. His younger brother Gawirrin Gumana AO, has taken a strong fatherly role, particularly regarding art instruction for Gumana and her younger brothers Yinimala and Djimiyapin. Gumana is married to and assists her Marrakulu clan artist husband Garawan Wanambi.

After Gumana's initial experience assisting and painting collaboratively with other artists, in 2009 she started to paint her own works. These were Dhalwangu clan images of the deeper ocean - Mungurru. By 2012 Gumana was beginning to innovate both her paintings and process. She was the first artist to apply the template or skeleton of the composition using just a 'marwat' or thin brush made from human hair. Normally this was done with an ordinary brush and then marwat used to fill in cross hatch design. Gumana was also the first artist to use no earth pigments in the ground of the painting. She initiated the practice of applying the paint of the design to bare bark or wood. More recently she began mixing earth pigments with Gapan or white clay to create bright pastel natural colour ranges.

In 2019 Gumana's innovative pastel coloured larrakitj were included in the groundbreaking exhibition 'Gurrutu' for Tarnanthi at the Art Gallery of South Australia whom acquired the works.

MANINI GUMANA

BIOGRAPHY

Homeland: Gangan
Clan: Dhalwanju
Moiety: Yirritja

Buku-Larrnggay Mulka Centre

GROUP EXHIBITIONS

2020 TEN - Aboriginal Contemporary, Sydney Australia
2020 Top End Bugi - Koskela, Sydney
2020 Rising Stars 2020 - Outstation - Art from Art Centres, Parap NT
2019 Mittji – The Group - Hugo michell Gallery, Adelaide
2019 Gurrutu - Tarnanthi 2019 - Art Gallery of South Australia
2018 Gapan Gallery 2018 - Gapan Gallery, Garma Festival, Gulkula, Northeast Arnhem Land NT
2017 Saltwater: A Collection of Bark Paintings & Carved Objects - Yaama Ganu Gallery, Moree NSW
2016 Tradition & Innovation - Paris Parcours des Mondes 2016-Aboriginal Signature • Estrangin Gallery
2016 Gapan Gallery in the Past - Nomad Art Productions, Darwin NT
2016 Buku-Larrnggay Mulka - Yirrkala Printspace Exhibition - Gapan Gallery, Garma Festival, Gulkula, Northeast Arnhem Land NT
2016 Yirrkala Print Space Group Show - Koskela, Sydney NSW
2015 COAST / LINES - Short St Gallery, Broome WA
2014 Earth Wind and Fire - Galleria Gracis, Milan Italy (JGM ART)
2014 Marshall Arts - Adelaide, SA
2012 The Art of Arnhem Land - JGM Gallery, London UK
2011 BARRKU! - Harvey Arts Project, Idaho USA
2011 Miyalk - Women, Feminine Art from Yirrkala - Framed Gallery, Darwin NT

COLLECTIONS

Charles Darwin University Art Collection
Art Gallery of South Australia, Adelaide SA
Debra and Dennis Scholl Collection
Kerry Stokes Larrakitj Collection, WA